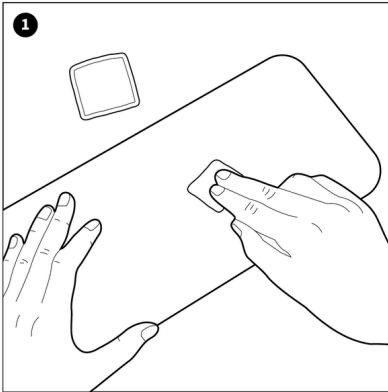
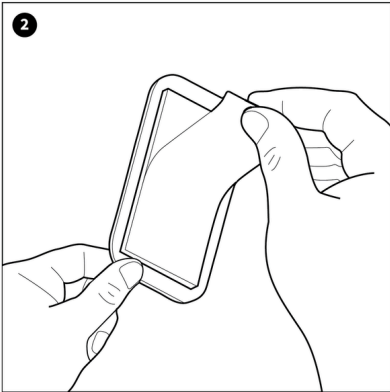


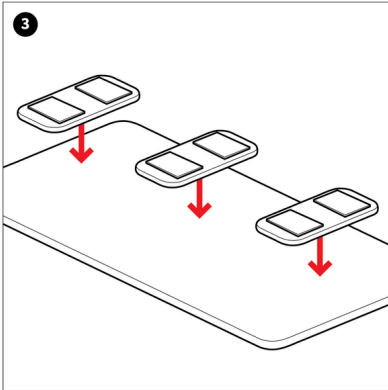
# MAGPLATE BUMPER+



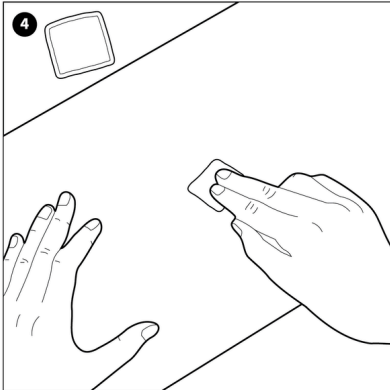
**Prep Plate Surface**  
Wipe the rear face of the number plate with the supplied alcohol wipe, wait 30 seconds until completely dry.



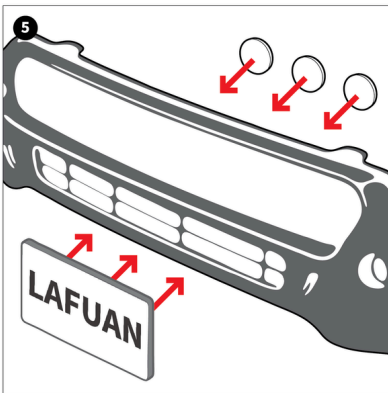
**Peel Liner**  
Peel the liner from a puck.



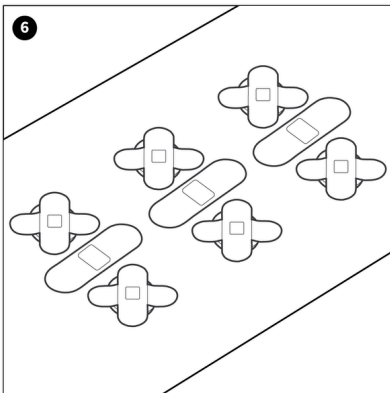
**Attach Pucks**  
Press firmly to the plate for 20 seconds; repeat for the other two, spacing them evenly.



**Prep Bumper Inside**  
Clean the inside surface of the bumper where each anchor magnet will sit.



**Position Plate**  
Hold the plate in position on the bumper, slide an anchor magnet behind the bumper until it locks to the puck.



**Secure Anchor**  
While the magnet's pulling against the bumper, slap the bandaid over it to lock the anchor in place. Add more tape for additional hold.



**Snap & Go**  
Snap the plate on and off as needed.